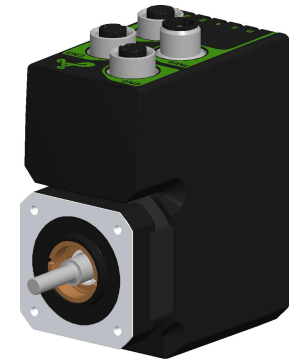
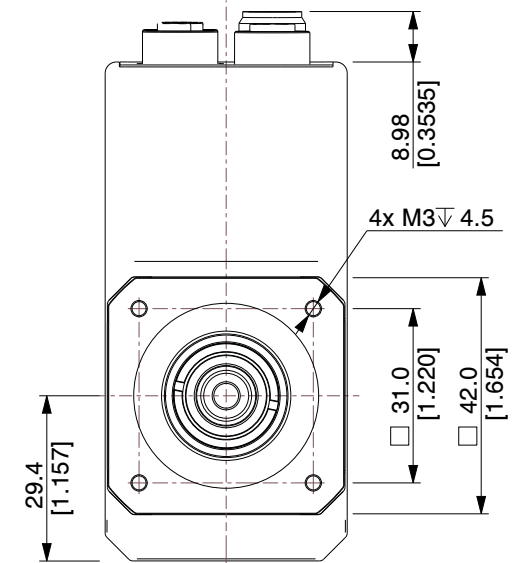
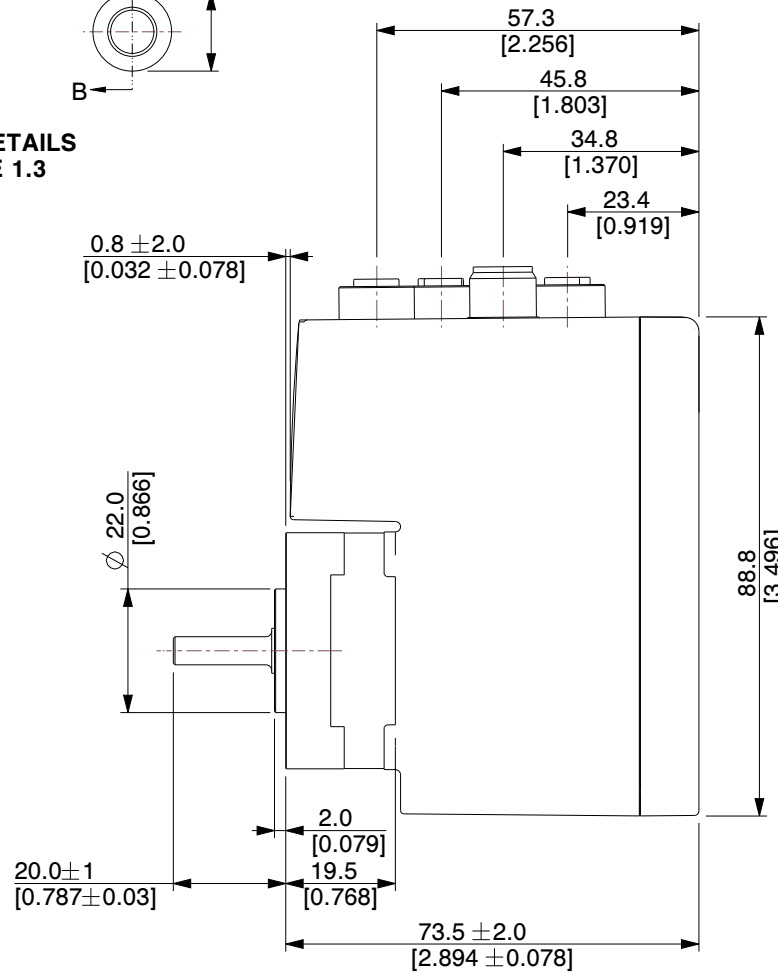
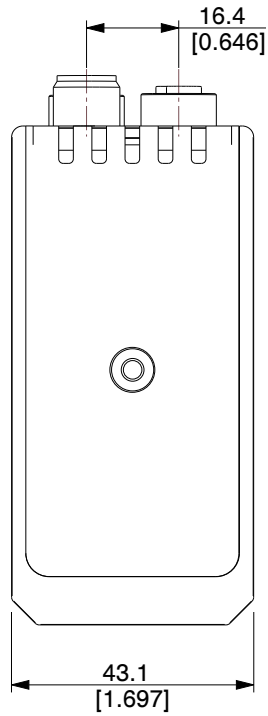
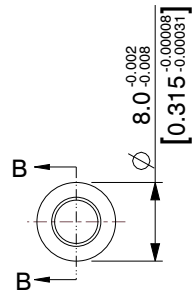


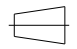



SHAFT DETAILS
SCALE 1.3



NOTES:

1. Operation Modes : Passive, Position, Gear, Velocity.
2. Encoder Type: Internal, magnetic, absolute multiturn Closed loop ready.
Resolution per rev.: Displayed: 409600 counts - internal: 4096 counts.

JVL A/S Bregnerødvej 127 DK-3460 Birkerød Denmark		 					
PART NUMBER: <p style="text-align: center;">MIS171S16ECH466</p>							
PART DESCRIPTION: <p style="text-align: center;">Integrated Stepper Motor</p>							
		A4	<table border="1"> <tr> <td>SCALE</td> <td>NTS</td> </tr> <tr> <td>UNIT</td> <td>MM [Inch]</td> </tr> </table>	SCALE	NTS	UNIT	MM [Inch]
SCALE	NTS						
UNIT	MM [Inch]						
<small>Unless specifically stated otherwise, this drawing is the property of JVL A/S and no feature embodied herein may be disclosed except as previously authorized</small>							