

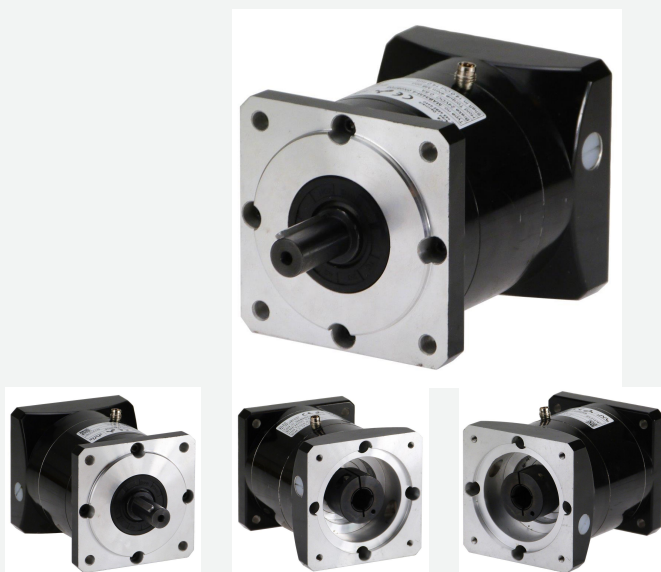


MAB34M-4.0N05F05

Brake 24V for NEMA34, I14/O14mm, M8-con, 4.0Nm

The brake is used when it is desired to hold the motor shaft fixed at power off, or when the motor is used in a vertical linear application. When 24 VDC is connected, the brake will be deactivated and the motor can turn freely. The electronic brake is designed to be mounted on step- and servo motors from NEMA17 42x42mm to NEMA43 110x110mm. Brake can be mounted directly on JVL stepper motor and integrated stepper motor but also other brand that use NEMA standard. Shaft collars ring with 1 screw is used to tighten brake on motor shaft.

A high quality 24VDC electro-magnetic spring or magnetic brake is mounted inside the housing. Some brakes use hub connection to brake disc so it can be mounted on motors with axial play. Holding torque from 0.5Nm to 10Nm. A wide range of input and out diameter can be delivered from stock. Brakes are typically equipped with M8 4 pin male connector for 24V control voltage and high IP protection but can also be delivered with wire out. It is only recommended to use the brake only as a holding brake and not as an emergency brake.



General information

Description	Brake 24V for NEMA34, I14/O14mm, M8-con, 4.0Nm, NEMA34, Formfactor M Spring, M8 ex. Cable, Input shaft: Ø14 mm IP42, Front mounted, Output shaft: Ø14 mm IP42, 4.0 Nm		
Manufacture	JVL	Brake Holding torque [Nm]	4
Flange/Shaft	NEMA34 14.00mm	Flange Brake Front	NEMA34 14.00mm
Connector Brake	M8 4-pin Male	Shaft Type Output	Round
Brake current [A]	0.175		
Protection house	IP42	Protection shaft	IP42
Color	Black	Approval - ROHS-3	Yes
Country Of Origin	DK	Tariff no	84836080
Tariff no US			

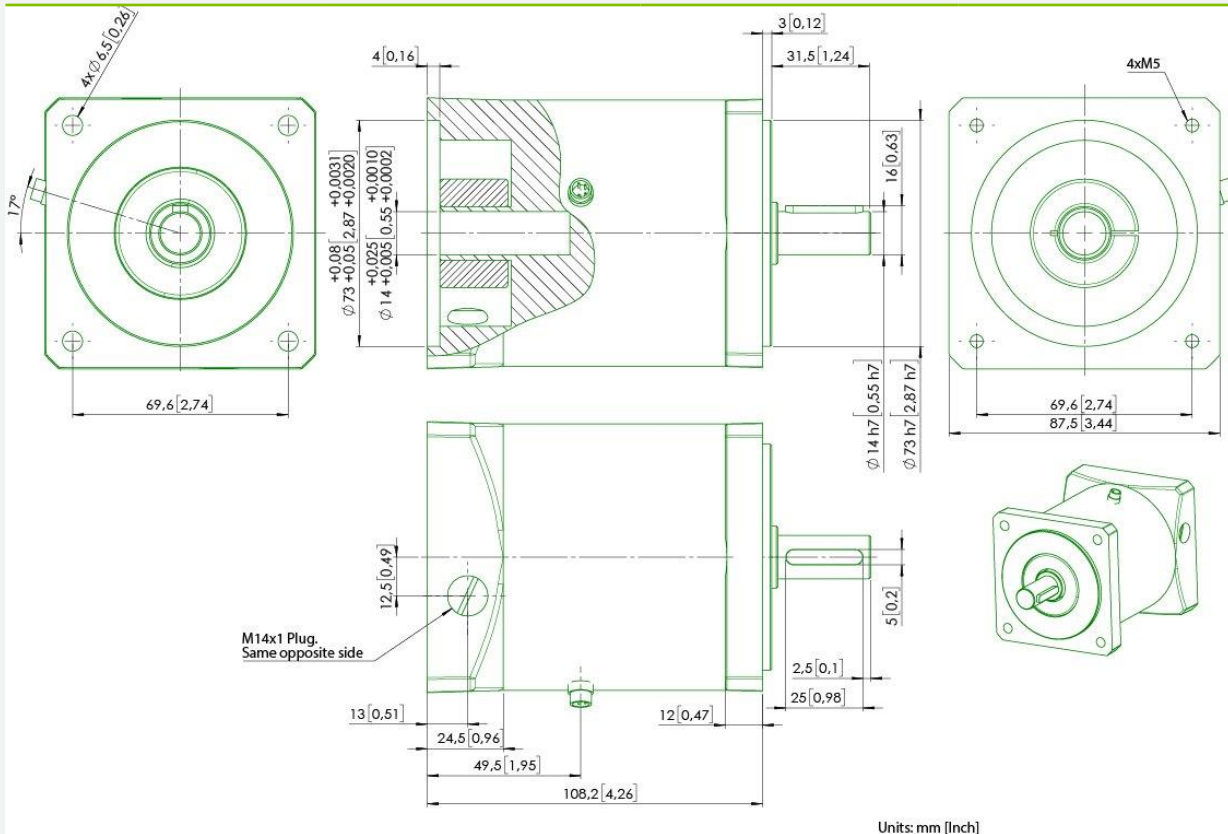


MAB34M-4.0N05F05

Brake 24V for NEMA34, I14/O14mm, M8-con, 4.0Nm

Mechanical information

Brake Holding torque [Nm]	4	Brake current [A]	0.175
Flange/Shaft	NEMA34 14.00mm	Flange Brake Front	NEMA34 14.00mm
Shaft input lenght max [mm]		Shaft length Front [mm]	
Brake input shaft diameter [mm]	14.00	Brake output shaft diameter [mm]	14.00
Shaft Key included	Key NOT included	Shaft Key Dimension	
Brake Velocity [rpm]		Brake Velocity Max [rpm]	
Radial load [N]		Axial load [N]	
Radial load distance [mm]		Axial play force [N]	
Axial play [mm]			
Front bearing type		Rear bearing type	
Brake length [mm]	108.5	Max Brake Cycles	80000
Noise <[db]		Color	Black
Weight net [kg]	1.35	Weight gross [kg]	1.66
CAD 2D [PDF]	Download	CAD 3D [STEP]	Download
CAD 2D [DWG]		CAD 3D [DWG]	
CAD 3D [IGES]		CAD 3D [EASM]	
Datasheet - pdf	No		
Tariff no	84836080	Country Of Origin	DK





MAB34M-4.0N05F05

Brake 24V for NEMA34, I14/O14mm, M8-con, 4.0Nm

Mechanical information

Brake Collar bolt	M4	Brake Collar max torque	3.4
		[Nm]	
Brake Collar tool (Hex)	3.0	Transfer Torque max	
Temperature ambient		Temperature max [°C]	
[°C]			



JVL A/S | Bregnerødvej 127 | DK-3460 Birkerød | Denmark | Tel. (+45) 4582 4440 | www.jvl.dk | sales@jvl.dk

MAB34M-4.0N05F05

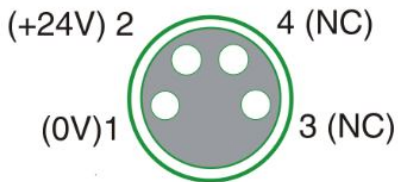
Brake 24V for NEMA34, I14/O14mm, M8-con, 4.0Nm

Connector information

Connector Brake

M8 4-pin Male

Picture connections



Socket front view

TT2156GB

Pin 1 blue = 0 VDC, Pin 2 brown = +24 VDC, Pin 3 white = NC, Pin 4 black = NC.

Brake Cable included

No



MAB34M-4.0N05F05

Brake 24V for NEMA34, I14/O14mm, M8-con, 4.0Nm

Torque, force and Power information

Brake Holding torque	4
[Nm]	



MAB34M-4.0N05F05

Brake 24V for NEMA34, I14/O14mm, M8-con, 4.0Nm

Electrical information

Brake current
[A]

0.175

Pull-in Voltage

Main supply
[V]

DC 24

Drop-out Voltage



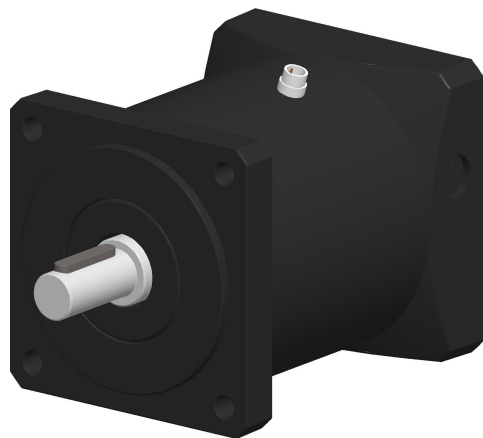
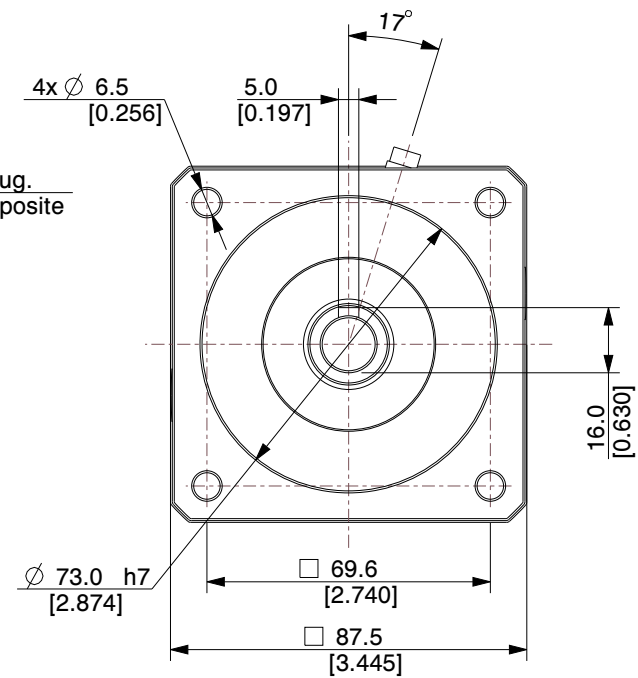
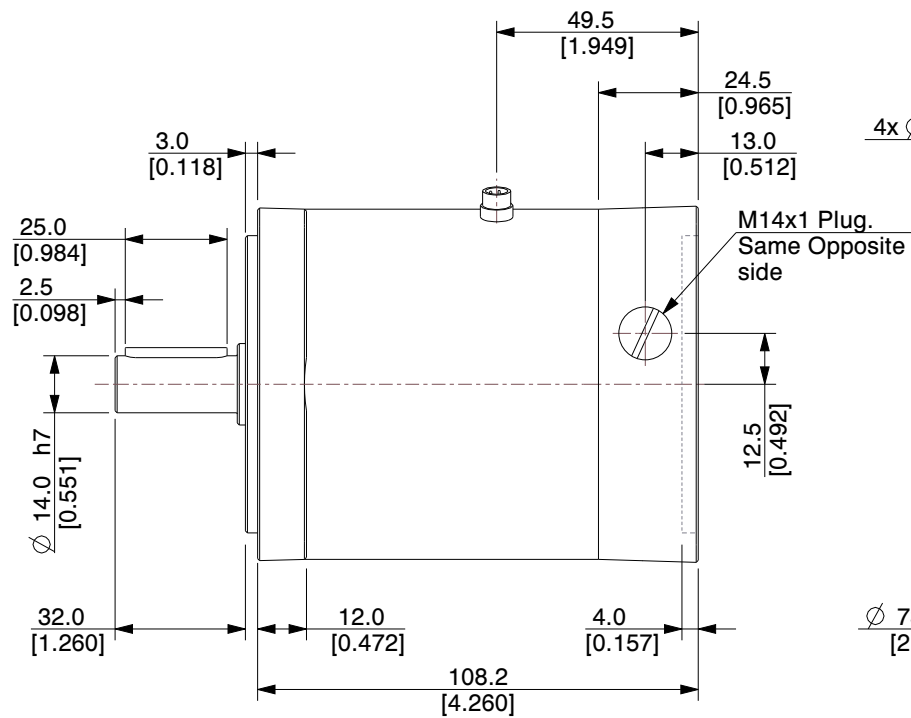
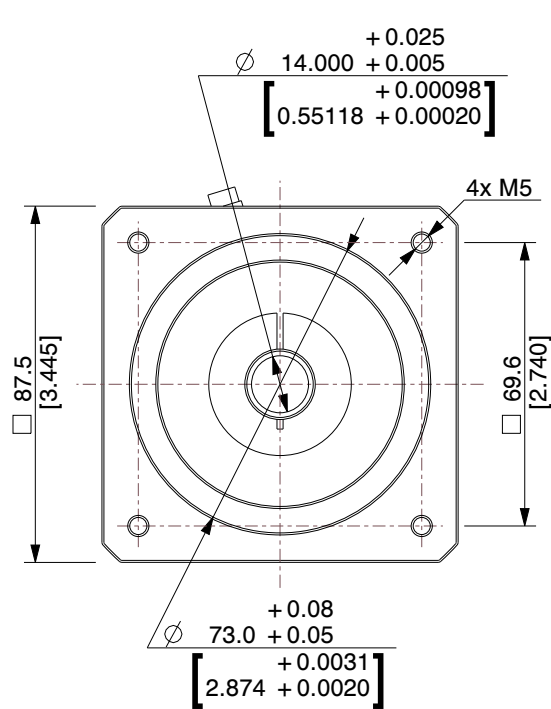
JVL A/S | Bregnerødvej 127 | DK-3460 Birkerød | Denmark | Tel. (+45) 4582 4440 | www.jvl.dk | sales@jvl.dk

MAB34M-4.0N05F05

Brake 24V for NEMA34, I14/O14mm, M8-con, 4.0Nm

Cable information

Item number	Mount on	Cable con 1 +Con 1 angle	Cable application	Wires no totally	Cable length [m]
Item description		Cable con 2 +Con 2 angle	Cable flexibility	Wire [mm2]	Connector 1 LED



NOTES:

1. Shaft Collar Screw Torque (M4): 4 Nm.

ELECTRONIC BRAKE SPECIFICATIONS			
Rated Speed	-	Voltage	24VDC
Max. Speed	-	Current	0.5 A
Connector	M8. Pin2+, Pin1-, Pin3 and 4 NC. Male 4-pin.	Holding Torque	4.0 ± 10% Nm
Approval	-	Weight (ex. cable)	2.02 Kg
Surface	-	Protection	IP42

JVL A/S

Bregnerødvej 127
DK-3460 Birkerød
Denmark



JVL
www.jvl.dk

PART NUMBER:

MAB34M-4.0N05F05

PART DESCRIPTION:

**BRAKE 24V for NEMA34
ID14/OD14 4.0 ± 10% Nm**



A4

SCALE

NTS

UNIT

MM [Inch]

Unless specifically stated otherwise, this drawing is the property of JVL A/S and no feature embodied herein may be disclosed except as previously authorized